



# INSTRUCTION BULLETIN

No. 340449  
Machine: ATLV 4300  
Published: 10-00/00  
System: HYDRAULICS

**NOTE: DO NOT DISCARD the Parts List from the Instruction Bulletin. Place the Parts List in the appropriate place in your machine manual for future reference. Retaining the Parts List will make it easier to reorder individual parts and will save you the cost of ordering an entire kit.**

*NOTE: Numbers in parenthesis ( ) are reference numbers for parts listed in Bill of Materials.*

Installation instructions for kit number 368535

## **SYNOPSIS / PROBLEM:**

This kit contains the parts needed to install a hydraulic warning kit on the model ATLV 4300 litter vacuum.

Please follow step-by-step instructions.

## **SPECIAL TOOLS / CONSIDERATIONS: NONE**

(Estimated time to complete: 2 hours)

## **PREPARATION:**

(Refer to FIG. 1 thru 4)

**FOR SAFETY: Before leaving or servicing machine, stop on level surface and set parking brake. Then turn off machine and remove key.**

1. Disconnect battery cables from machine.



**WARNING: Always disconnect battery cables from machine before working on electrical components.**

2. Open the rear debris hopper, and empty any debris left in the machine

## **WARNING LIGHT INSTALLATION:**

(Refer to FIG. 1 thru 4)

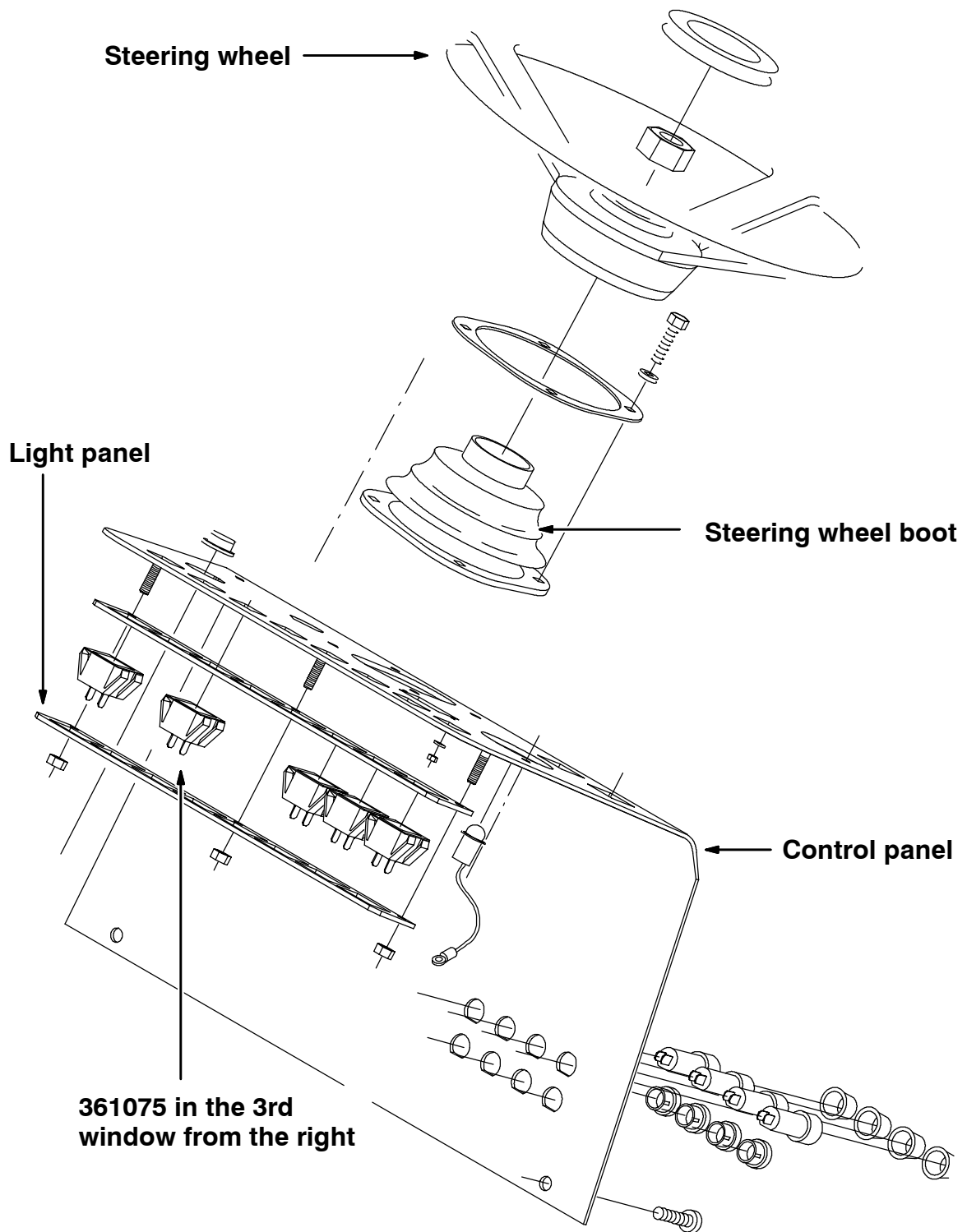
1. Remove and set aside the steering wheel securing nut cover, securing nut and the steering wheel. (Refer to FIG. 1)
2. Loosen the steering column boot. (Refer to FIG. 1)
3. Disconnect the turn signal wire harness (OPTION) from the main harness. Loosen and set aside the turn signal assembly (OPTION) from the steering column if mounted.
4. Disconnect and set aside the steering column boot and mounting hardware. (Refer to FIG. 1)
5. Remove and set aside the control panel mounting bolts. Lift the control panel off from the machine to access the light panel on the back side. (Refer to FIG. 1)
6. Remove and set aside the light panel securing nuts holding the light panel in place. Install hydraulic warning light 361075 in the panel, in the third slot from the right. (Refer to FIG. 1)
7. Reinstall the light panel behind the control panel with the set aside mounting hardware. (Refer to FIG. 1)

8. Plug the warning light into the main harness 38GRN/3BLK. (Refer to FIG. 3)
9. Replace the control panel, and secure in place with the set aside control panel mounting hardware. (Refer to FIG. 1)
10. Reinstall the steering column boot. Do not secure boot mounting hardware yet, only hand tighten. (Refer to FIG. 1)
11. Reinstall the turn signal assembly (OPTION) to the steering column. Route the turn signal assembly wire down under the steering column boot, and plug into the main harness.
12. Tighten the steering column boot mounting hardware. (Refer to FIG. 1)
13. Reinstall and secure the steering wheel with the steering wheel nut. Replace the steering wheel nut cover. (Refer to FIG. 1)

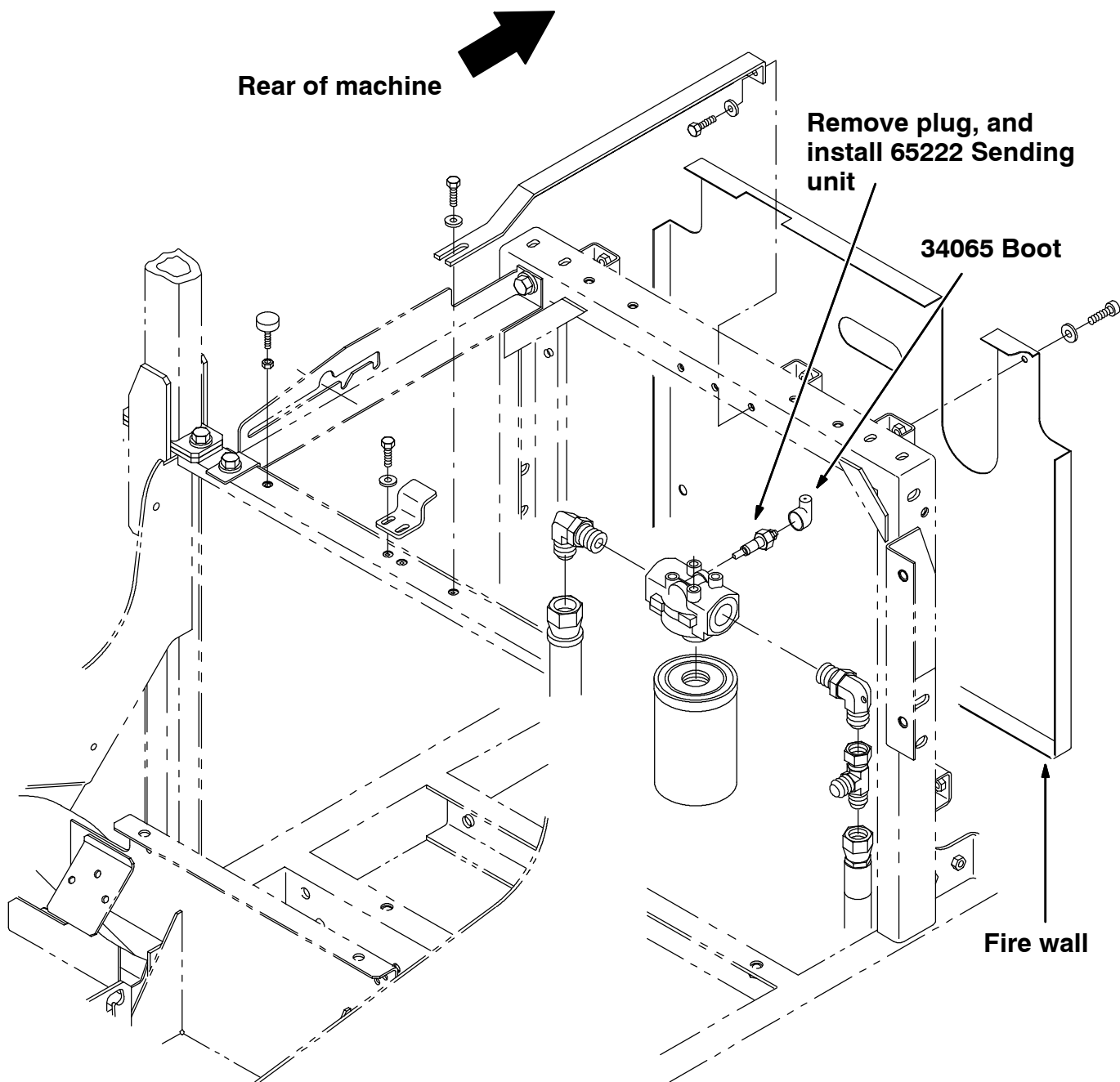
#### **SENDING UNIT INSTALLATION:**

**(Refer to Figures 1, 2 and 3)**

1. Remove and set aside the rear fire wall between the hopper and the engine compartment. (Refer to FIG. 2)
2. Remove the plug from the back side of the hydraulic filter. (Refer to FIG. 2)
3. Mount the sending unit 65222 in the back side of the hydraulic filter in place of the plug. (Refer to FIG. 2)
4. Guide the ring terminal wire 38GRN from the main harness, through the sending unit boot 34065. Connect the ring terminal wire 38GRN to the sending unit 65222. (Refer to FIG. 4)
5. Slide the sending unit boot 34065, over the sending unit 65222. (Refer to FIG. 2)
6. Replace the rear fire wall on the rear of the machine. (Refer to FIG. 2)
7. Place the debris hopper back into the upright position. Close and secure the debris hopper lid.
8. Reconnect the battery cables. Start the machine, and check for proper operation.



**FIG. 1 - WARNING LIGHT INSTALLATION**



**FIG. 2 - BOOT AND SENDING UNIT INSTALLATION**

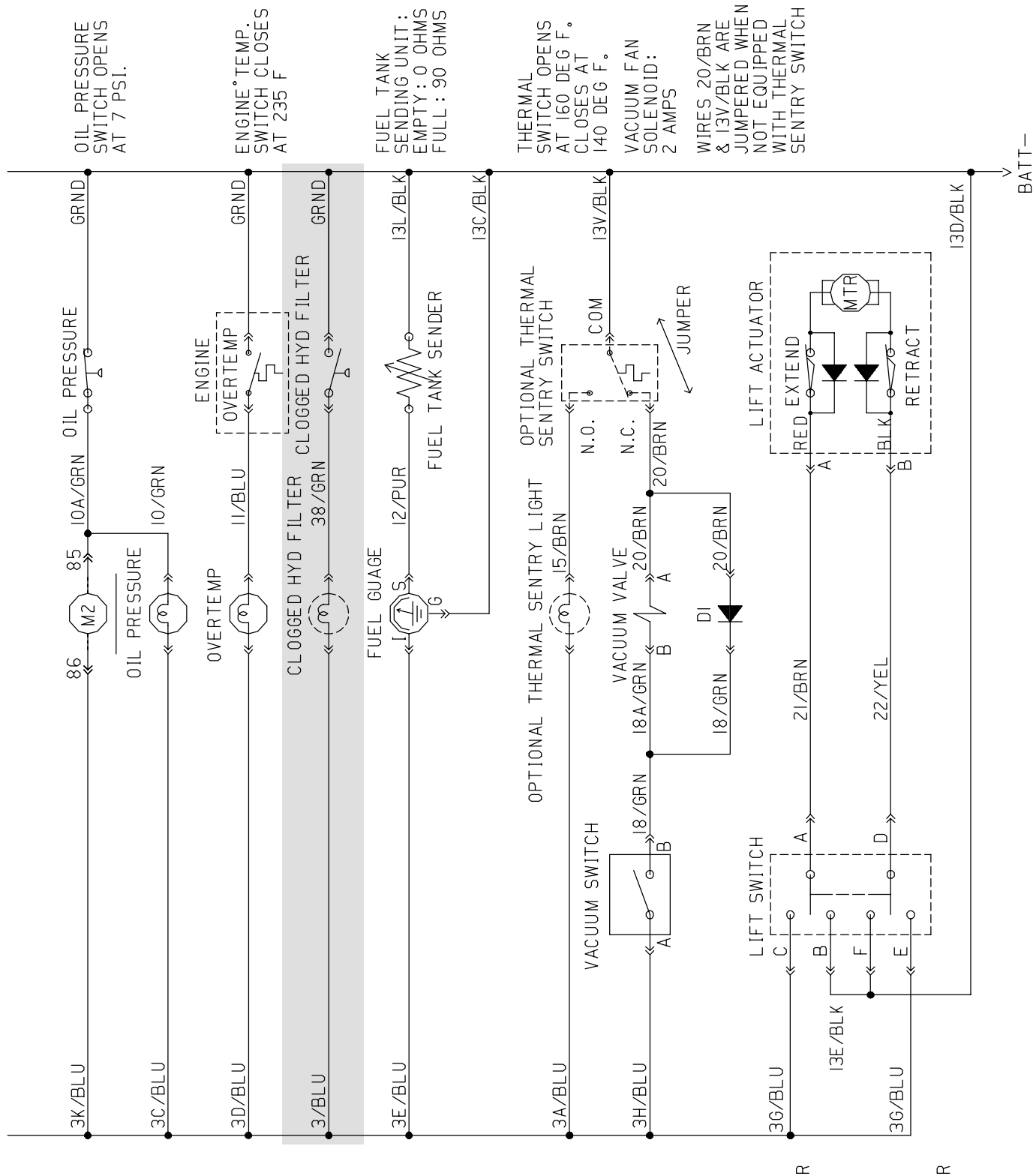
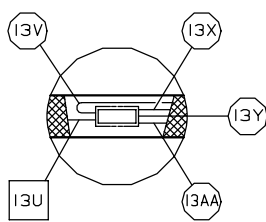
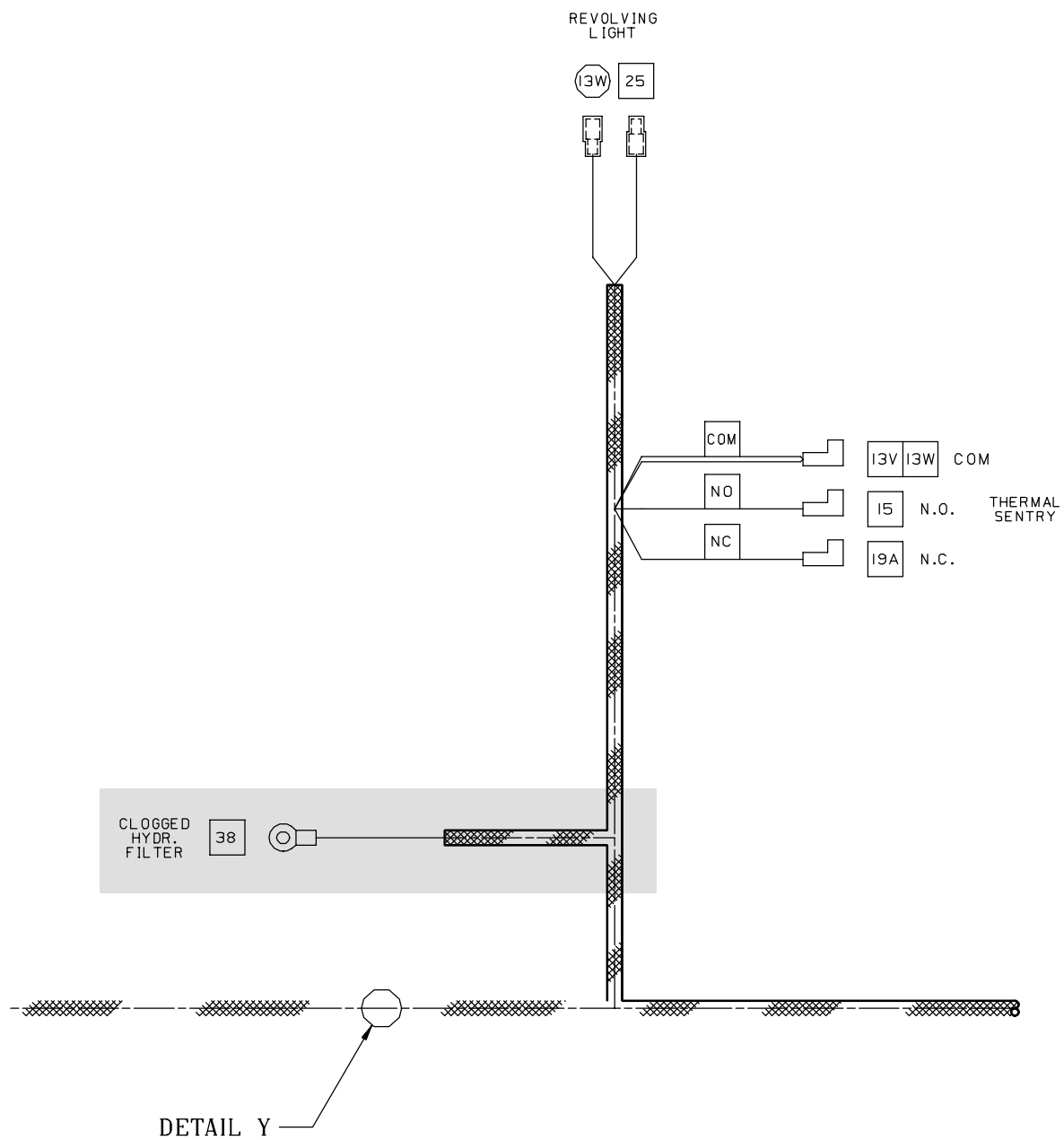


FIG. 3 - ELECTRICAL SCHEMATIC



DETAIL Y

FIG. 4 - WIRE HARNESS

**BILL OF MATERIALS FOR HYDRAULIC WARNING KIT 368535**

<b>Ref.</b>	<b>TENNANT Part No.</b>	<b>Description</b>	<b>Qty.</b>
1	65222	Send-unit, fltr, hyd	1
2	34065	Boot, 90 deg, 0.69D 0.12D	1
3	361075	Light, panl, 14 VDC	1

TENNANT COMPANY  
P. O. Box 1452  
Minneapolis, MN 55440-1452